

KARIR EXPO

AN INCLUSIVE CAREER FAIR

MAY 25, 2026 | SPACE AT ONE AYALA, MAKATI CITY



PFIP's **KARIR** is the first and only career fair in the Philippines dedicated to workplace inclusion, connecting 5,000–6,000 jobseekers and top academic institutions to employers committed to equitable, welcoming and LGBTQIA+ affirming top multinational and local organizations

LOCALIZED AND RELATABLE

Filipino slang that reflects doing your best in what you do and pursuing growth with purpose.

EMPLOYMENT-FOCUSED

Clearly centers on jobs, professional development, and workplace opportunity.

MEMORABLE & DISTINCTIVE

Positioned to grow into an annual career opportunity platform that promotes inclusion.

BRIDGES COMMUNITIES & EMPLOYERS

Supports PFIP in connecting LGBTQIA+ talent with inclusive organizations.



EVENT VIBE







PROGRAM HIGHLIGHTS





OPENING CEREMONY

Symbolic Bell Ringing

ON-GROUND CHECK

Highlight on-ground
partner booths

SPEED HIRING

Employee Referral Program
Same-day hiring process

KEYNOTE MESSAGE

For Co-Presenters

PARTNER SEGMENTS

Allocated stage time for
top tier partners

PANEL DISCUSSIONS

Moderator from co-presenter
& partners

SPECIAL PERFORMANCES

Surprise performances:
Partner companies & External performers





WHY PARTNER?





EXPO CAREER LAB

UNMATCHED
TALENT ACCESS
AT SCALE

PREMIUM BRAND
VISIBILITY &
ENGAGEMENT



STRATEGIC
RECRUITMENT
& EMPLOYER
BRANDING
PLATFORM

PURPOSE-DRIVEN
IMPACT &
INDUSTRY
LEADERSHIP

**PARTNERS DON'T JUST PARTICIPATE:
THEY LEAD THE CONVERSATION ON
FUTURE-READY EMPLOYMENT**

AUDIENCE & REACH

5,000-6,000 Projected Attendees
50+ Target Participating Companies /
Employers
30+ Target Participating Universities &
Schools
TBD Job Opportunities Available
10+ Industry Partners & Organizations

VISIBILITY & MEDIA

15K+ Social Media Reach
100K+ Digital Campaign Impressions
10+ Media & Community Partners
Influencers / Community Advocates
Engagement





SPONSORSHIP HIGHLIGHTS



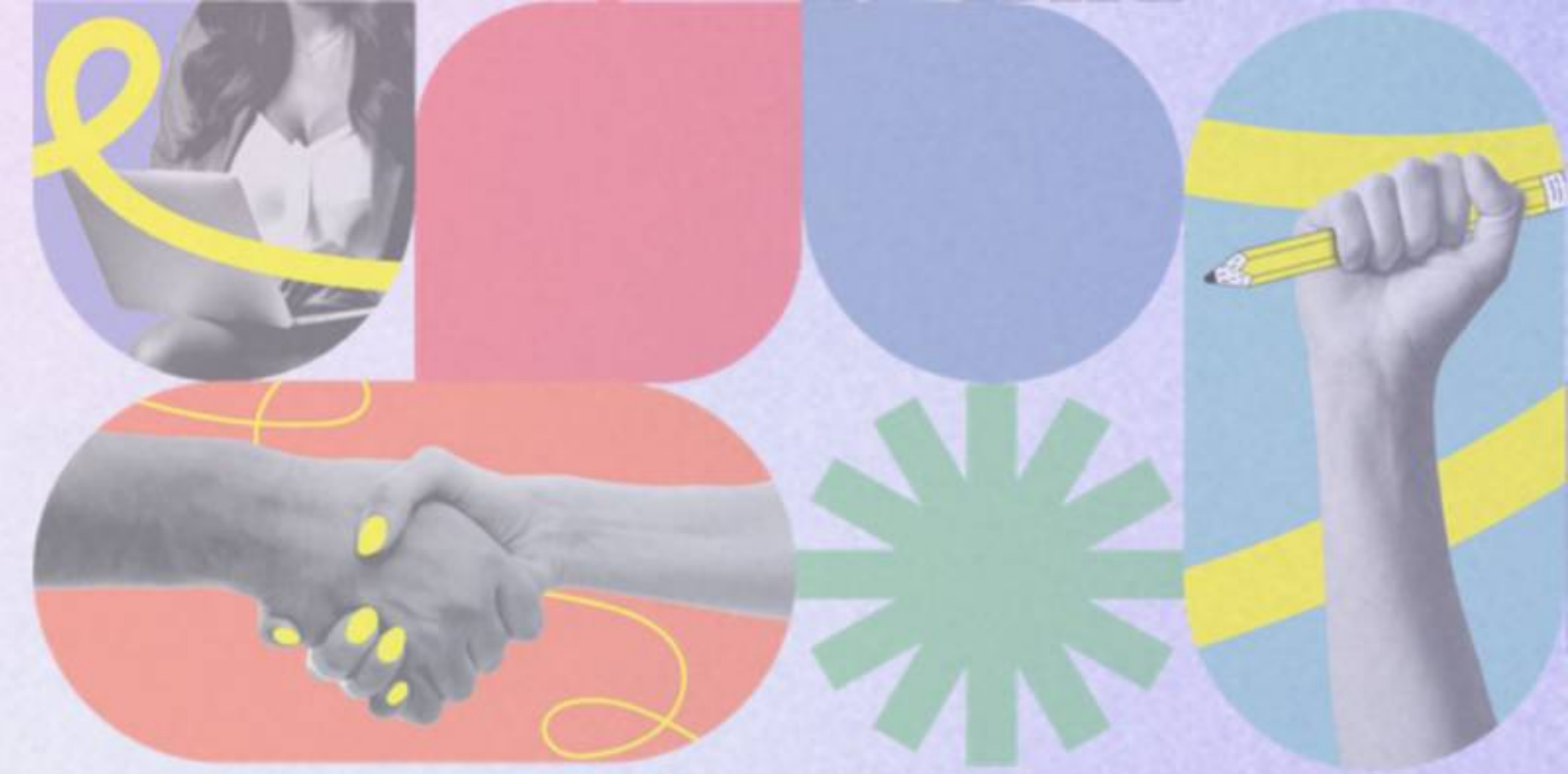
BOOTH DETAILS



| | CO-PRESENTER | PARTNER | PLATINUM | GOLD | SILVER | STANDARD 1 | STANDARD 2 |
|-------------|--------------|-------------|-------------|-------------|-------------|------------|------------|
| Booth sizes | 5x5 | 4x4 | 4x2 | 4x2 | 4x2 | 4x2 | 3x2 |
| Unit Price | ₱350,000.00 | ₱250,000.00 | ₱200,000.00 | ₱150,000.00 | ₱100,000.00 | ₱50,000.00 | ₱40,000.00 |



BOOTH PEGS



WITH BOOTH SYSTEM



OPEN SPACE

CO-PRESENTER INCLUSIONS



Prime Booth Placement



Premium Branding Placement



5x5 Booth Space with Own Setup



Exclusive Interview Room



Branded VIP Lounge Experience



Exclusive 120s AVP Program Placement



Ceremonial Opening Participation



Panel Discussion Participation



Company Program Spotlight



Integrated Digital Branding Exposure



Featured Company Post on Social Media



PARTNER INCLUSIONS



Prime Booth Placement



Premium Branding Placement



4x4 Booth Space with Own Setup



Exclusive Interview Room



Panel Discussion Participation



Exclusive 120s AVP Program Placement



Integrated Digital Branding Exposure



Featured Company Post on Social Media



PLATINUM INCLUSIONS



Prime Booth Placement



Premium Branding Placement



4x2 Booth Allocation



Dedicated Interview Room For Tier



Panel Discussion Participation



Exclusive 30s AVP Program Placement



GOLD INCLUSIONS



Standard Booth Placement



On-ground Branding Display



4x2 Booth Allocation



Dedicated Interview Room For Tier



Brand Visibility with Marketing and Emails



Sponsor Acknowledgment On-stage & Social Media



SILVER INCLUSIONS



**On-ground
Branding Display**



**4x2 Booth
Allocation**



**Dedicated
Interview Room
For Tier**



**Brand Visibility
with Marketing
and Emails**



**Sponsor
Acknowledgment
On-stage &
Social Media**



STANDARD INCLUSIONS



**On-ground
Branding Display**



**4x2 or 3x2 Booth
Allocation**



**Open Interview
Rooms**



**Brand Visibility
with Marketing
and Emails**





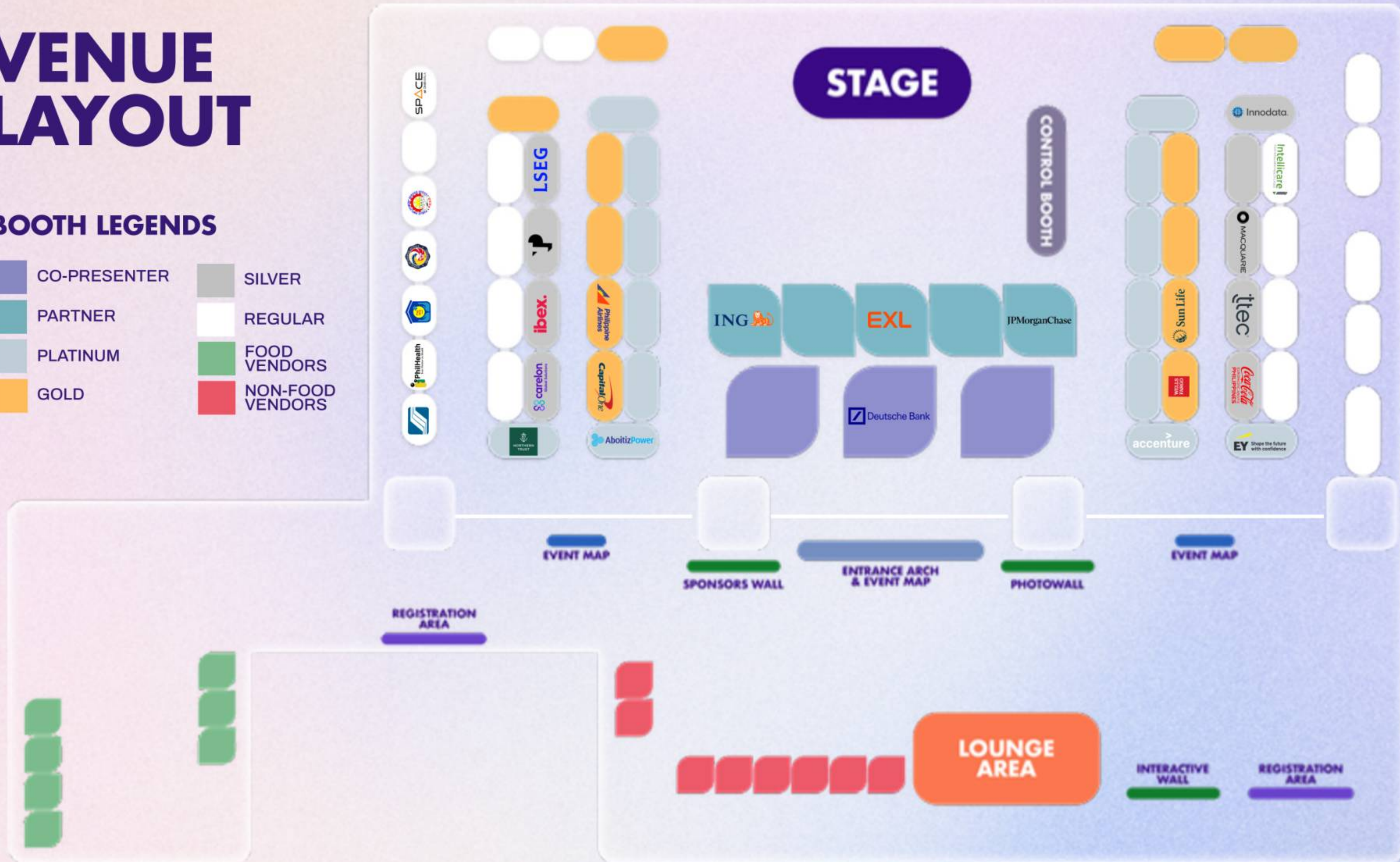
VENUE LAYOUT

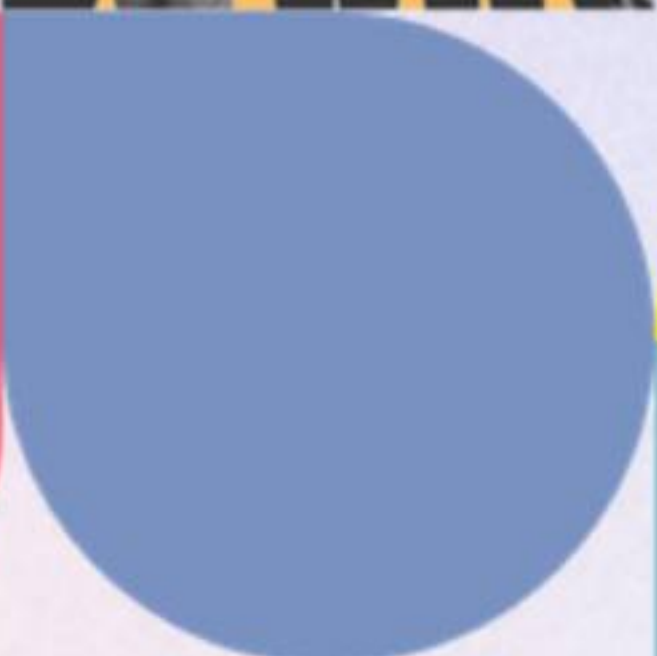
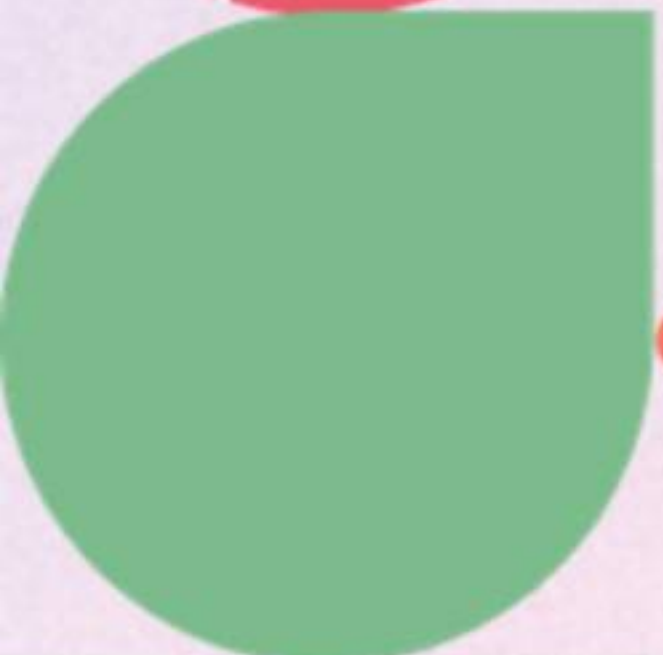


VENUE LAYOUT

BOOTH LEGENDS

- | | | | |
|---|--------------|---|------------------|
|  | CO-PRESENTER |  | SILVER |
|  | PARTNER |  | REGULAR |
|  | PLATINUM |  | FOOD VENDORS |
|  | GOLD |  | NON-FOOD VENDORS |





contact us:

careerfair@pfip.com.ph

PESO PERMIT

(PUBLIC EMPLOYMENT SERVICE OFFICE)

1. Copy of Latest Business Permit
2. Copy of Certificate of Registration (DTI, SEC, CDA, DOLE)
3. Data Privacy Consent Form
4. Certificate of No Pending Case (CNPC) issued by DOLE with 6 mos
5. Copy of License whichever Applies
 - D.O. 174 Certificate of Registration (for Local Manpower Agency)
 - Dept. of Migrant Workers License (for Overseas Manpower Agency)
6. Proof of Philjobnet Accreditation
7. List of Job Vacancy/ies

[CLICK TO DOWNLOAD FORMS](#)

[CLICK TO UPLOAD REQUIREMENTS](#)



VENUE PERMIT

ALL PARTICIPATING COMPANIES

1. Manpower, Equipment, Vehicle List
2. Booth Game / Activity

ADDITIONAL FOR COMPANIES WITH OWN STRUCTURE

1. Booth Design / Blueprint
2. Electrical Load Capacity

[CLICK TO UPLOAD REQUIREMENTS](#)





FAQ'S



Manpower & Representative Details

- 1. What is the maximum number of company representatives allowed at the booth at any given time?**
- 2. Do we need to submit the names and designations of our representatives in advance for ID purposes?**
- 3. Is there a food and beverage allocation provided for the exhibitors, or should we coordinate our own provision?**
- 4. What is the ingress time for Booth set-up**



Attendee Profiles

What is the projected number of attendees, and what is the typical profile (fresh graduates, mid-career professionals, specific majors)?

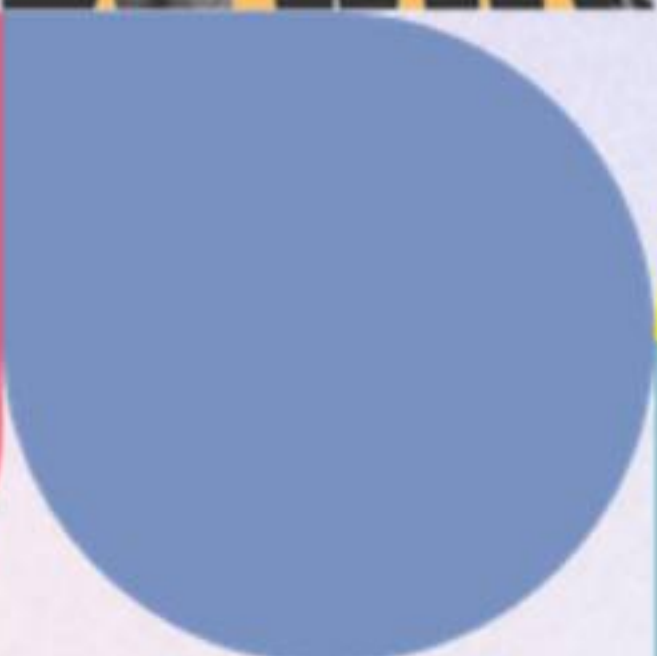
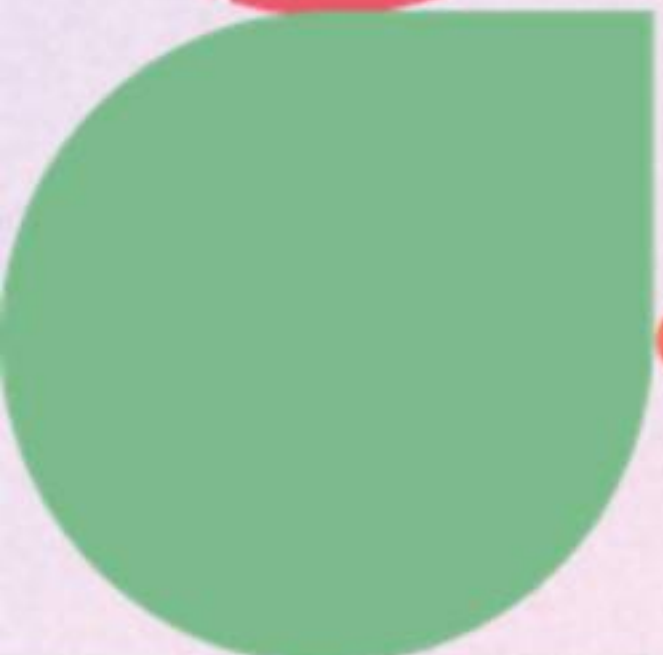
What are the expected peak traffic hours to help us manage our staff shifts?

Will the organizers provide a digital lead-scanning system (e.g., QR code scanning via an app), or should we prepare our own data collection methods?

Marketing & Engagement

Are there any restrictions on the types of banners, standing displays, or promotional giveaways we can bring?





contact us:

careerfair@pfip.com.ph